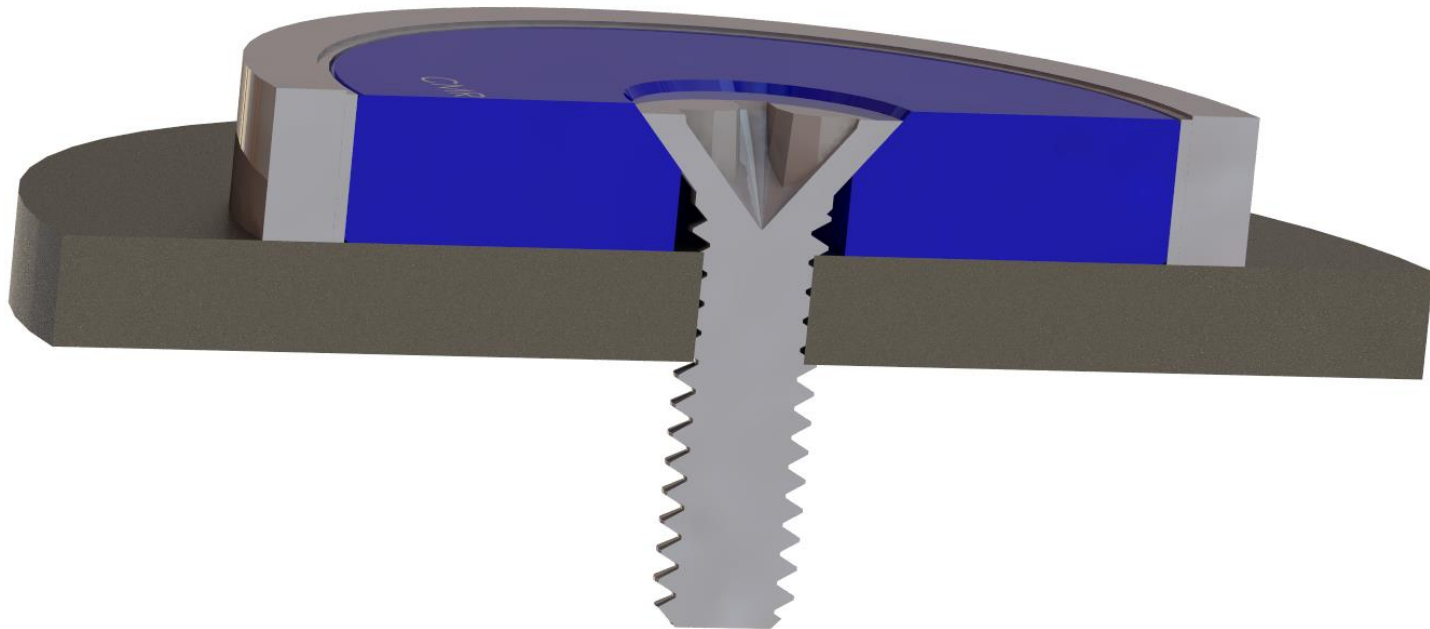




Mounting Polymagnets

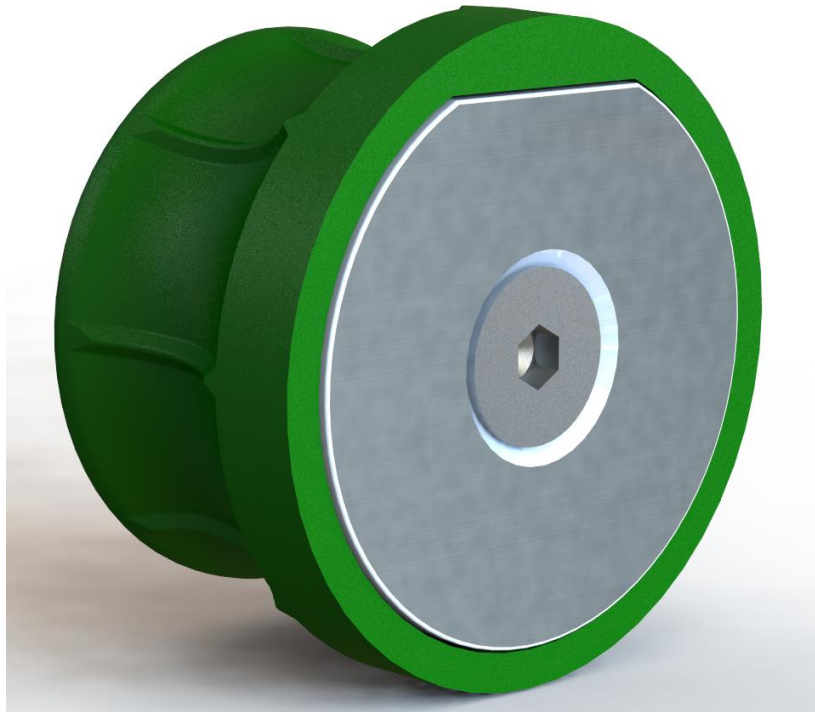
Mounting Magnets: Countersunk Magnets

- **Countersink magnets with sub-flush non-magnetic screws. Standard countersink sizes are available in the catalog. If the desired size is not available, a custom magnet can be created.**



Mounting Magnets: Countersunk Magnets

- A magnet held by one screw in the center may rotate. If possible, use a d-shape magnet in cases where torque may be applied to the system.



Mounting Magnets: Adhesive for Metals

- CMR recommends Loctite 326 applied to nickel coated magnets, and Loctite primer 7649 applied to desired target metal
- This same procedure works for epoxy coated magnets, however a longer cure time is required



Mounting Magnets: Adhesives for Plastic

- Adhering nickel coated magnets directly to plastic fails often. CMR recommends first gluing a metal shunt (Loctite 326/7649) to the magnet, and then adhering the metal to plastic
 - CMR recommends Loctite 480 for adhering backing metal to plastic.
- For small magnets with lower forces, direct adhesive or 3M VHB products are a viable option



Mounting Magnets: Hidden pockets

- Pockets can be mounted from the back, or slid in from the side
- Magnets are completely hidden inside of nonmagnetic material (injection molded plastic, aluminum, magnesium etc.)

